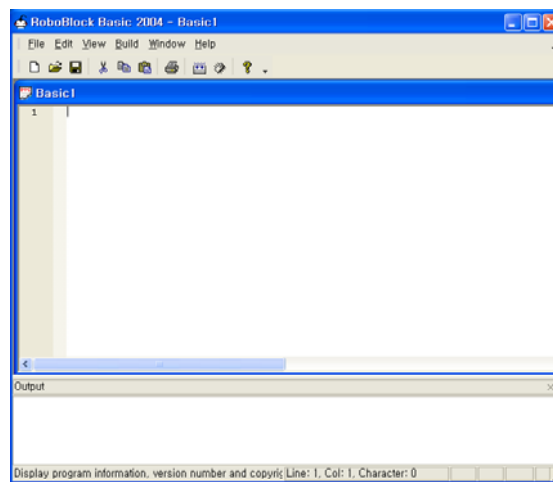


# 1. User Guide of Roboblock Basic2K4 software

First user should install Roboblock Basic2K4 program into personal computer. After installing it, perform the icon of Roboblock Basic2K4, then the program will be displayed in monitor as shown in Figure 1.1. When this program is being performed, connect the robo\_X232 cable to serial port of computer and serial port(RXD, TXD) of main board. If 5 V DC power is provided to the board, user completely prepared to use the program. If user doesn't have a computer without AB-1D board, user cannot use Roboblock Basic2k4 program.

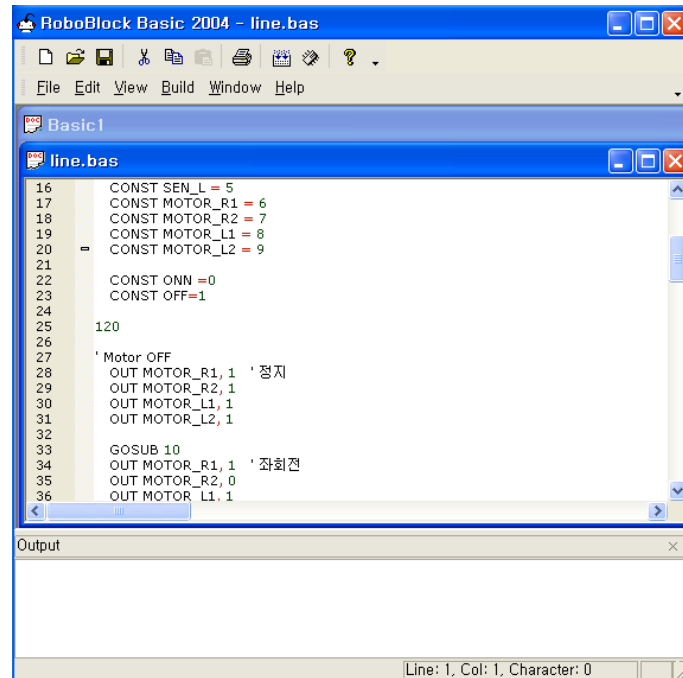
## 1.1 Setup

The initial screen will be displayed on the monitor as shown in the below Figure 1.1, if the icon of Roboblock Basic2k4 is clicked.



[Figure 1.1] initial screen of Roboblock Basic2k4 software

User can edit basic source as the same tips as that of general wordprocessor or editor and store it with selecting "save" in tool bar. The Figure1.3 shows the Tool bar and Status bar. Each function of Tool bar will be performed if user clicks the mouse left key on the each tool bar. Let's learn these functions.



[Figure 1.2] Sample of editing the Roboblock Basic2K4 program



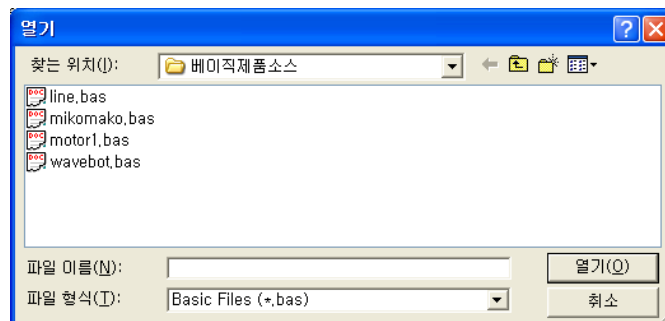
[Figure 1.3] Tool Bar (up) and Status Bar (down)



(a) new file : select this to make a new program.



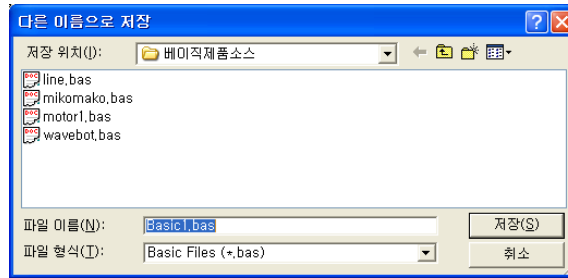
(b) open file : select this to open the existing file.



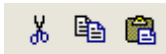
[Figure 1.4] Window of Open File



(c) Save : select to save the program which user made. User can save any file by input the file name such as [Figure1.5].



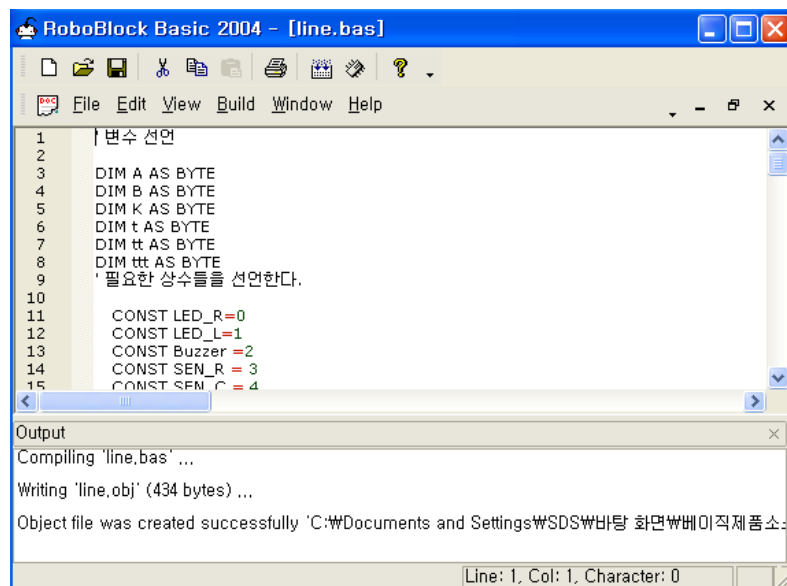
[Figure 1.5] Sample of saving a program



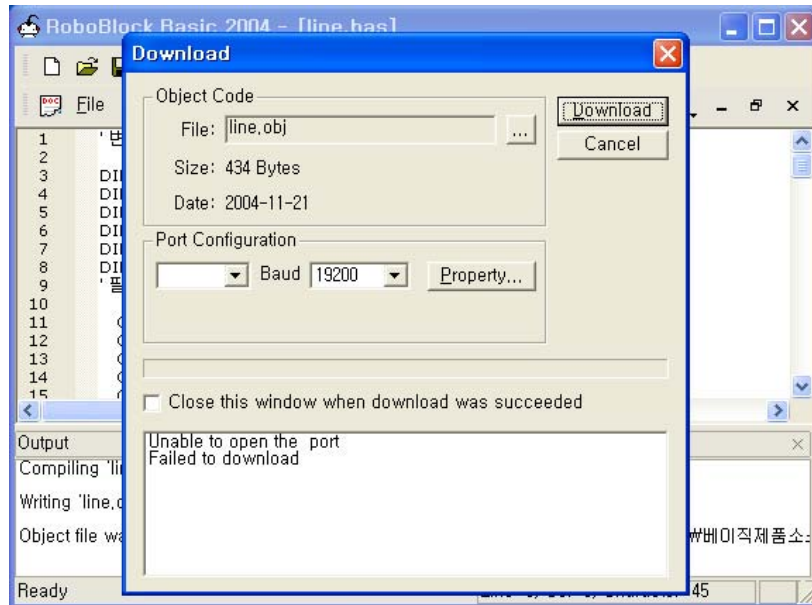
(d) Cut, Copy, Paste : these function is to edit the program.



(e) Compile, download : “compile” transfers the basic program to object code. “download” means the transferred object code is sending to main board. (Before downloading, the power should be provided to the main board.)



[Figure 1.6] The result of compile

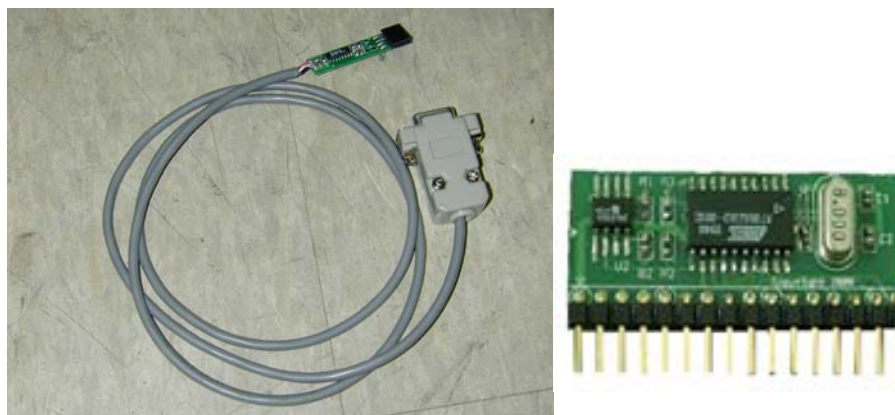


[Figure 1.7] Program Downloading

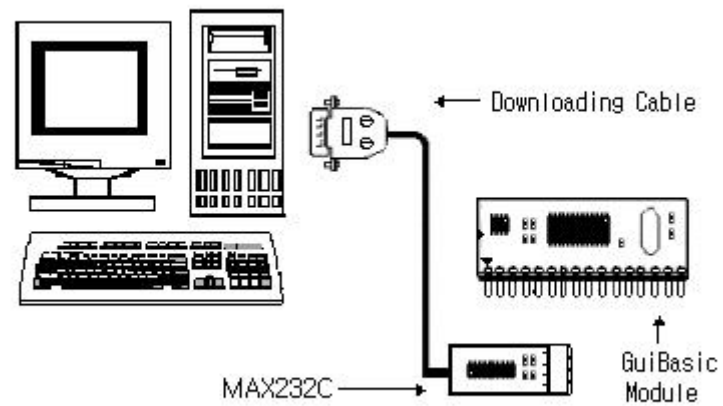
**NOTE :** Serial port, COM1 and baud, 19200 should be selected in Port Configuration to download.

#### \* DownLoading Cable

Servo Motor Controller board can accepts RS-232 Serial data from a host computer using this Downloading Cable.



[Figure1.8] DownLoading Cable and Basic Module



[Figure1.8] DownLoading Cable Connecting with Module

<http://www.roboblock.com>  
e-mail : robotoz@hotmail.com